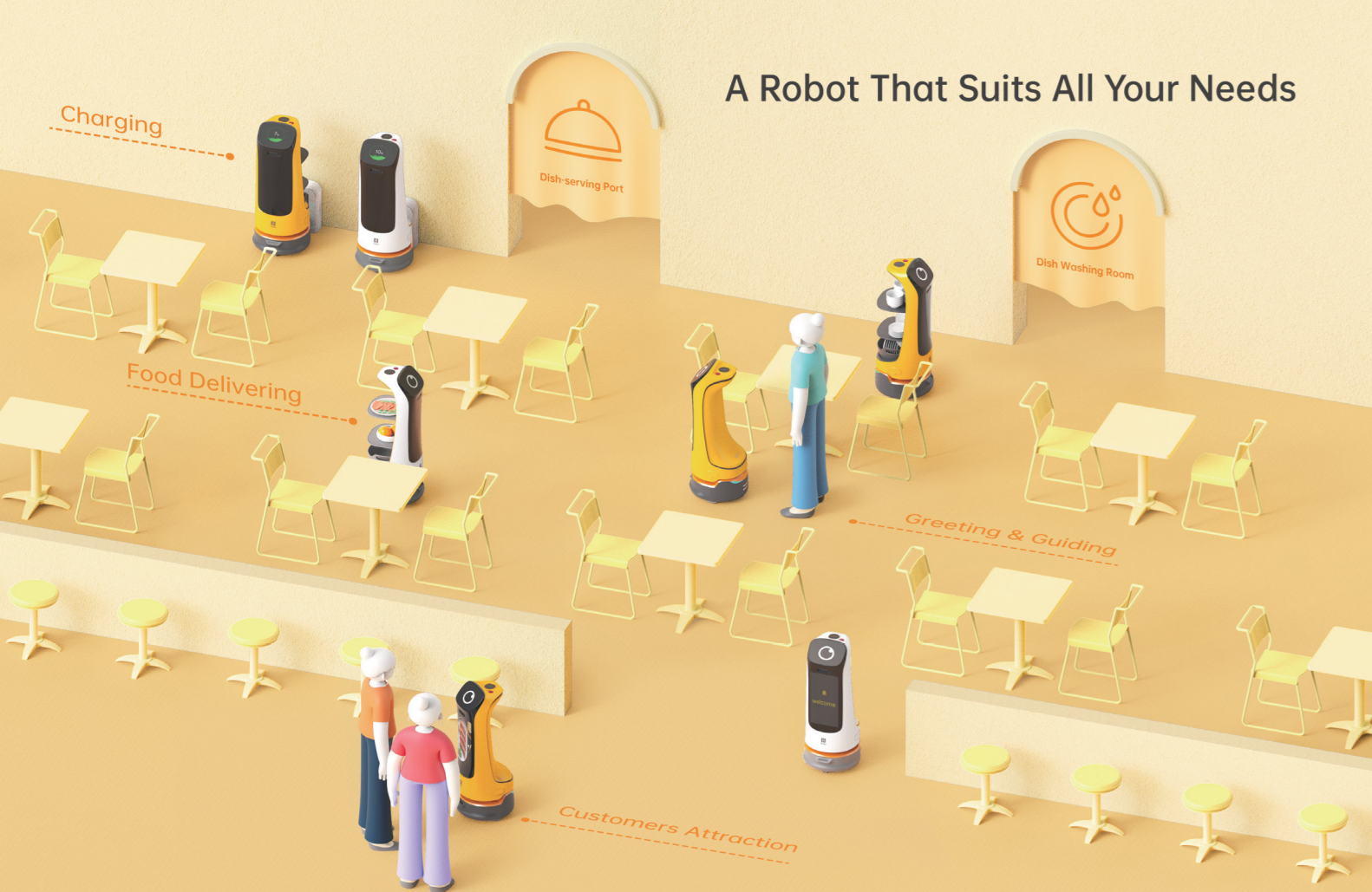


A Robot That Suits All Your Needs



[2] The docking station needs to be purchased additionally.

Shenzhen-based and founded in 2016, Pudu Robotics is a world-leading tech-focused enterprise dedicated to the design, R&D, production and sales of commercial service robots on a mission to use robots to improve the efficiency of human production and living.

Since its inception, Pudu Robotics has heavily invested in R&D, obtained multiple awards such as Red Dot and applied hundreds of core patents to lead the development of the robotics category and provide high technology products that would appeal to targeted markets. Pudu Robotics has been rapidly growing in recent years to become a “leader” in the global markets with coverage of over 60 countries worldwide. The robots are widely applied in restaurants, hospitals, schools, office buildings, government halls, subway stations, waiting rooms, etc.

NVC Robotics USA - Premium Authorized Distributor of Pudu Robotics

 www.nvcrobotics.com

 support@nvcrobotics.com

 + 877-682-7626 (10:00 am - 04:00 pm EST)

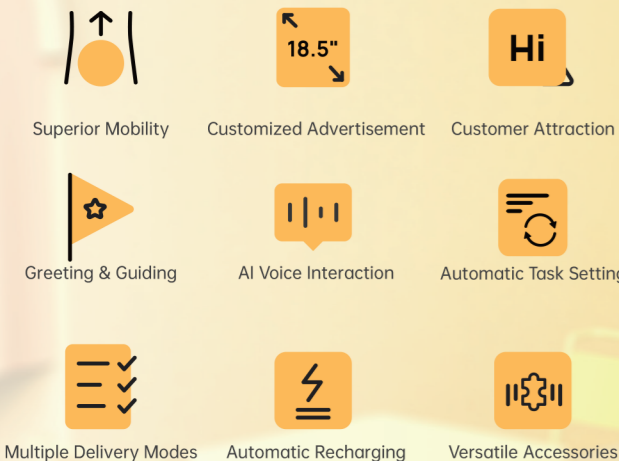
ENG! ES! عربي हिंदी اردو
Languages we speak

 PUDU

KettyBot

Flexible Multitasker



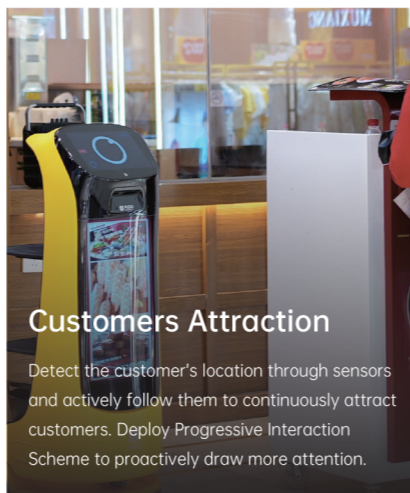


Machine dimension:	435×450×1120mm
Machine weight:	38kg
Carrying capacity:	30kg
Battery life:	>8h
Charging time:	4.5h (Automatic Recharging)
Clearance:	≥55cm
Cruise speed:	Max 1.2m/s
Ad display dimension:	18.5"
Battery capacity:	20Ah
Climb angle:	≤5°



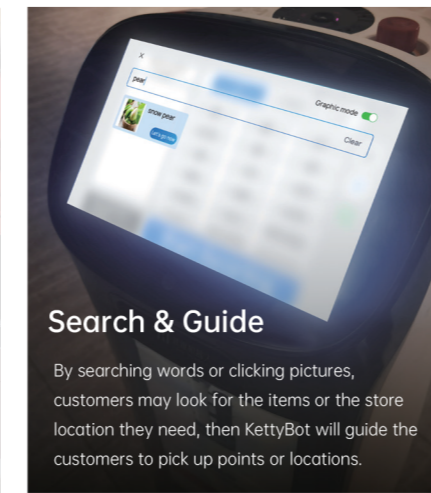
Enhanced Voice Interaction

The new voice interaction module integrates 360° sound localization and exclusive situational dialogues with cutting-edge echo cancellation, noise suppression, and reverberation elimination technology. Wake up voice interaction easily by just saying "hey PUDU".



Customers Attraction

Detect the customer's location through sensors and actively follow them to continuously attract customers. Deploy Progressive Interaction Scheme to proactively draw more attention.



Search & Guide

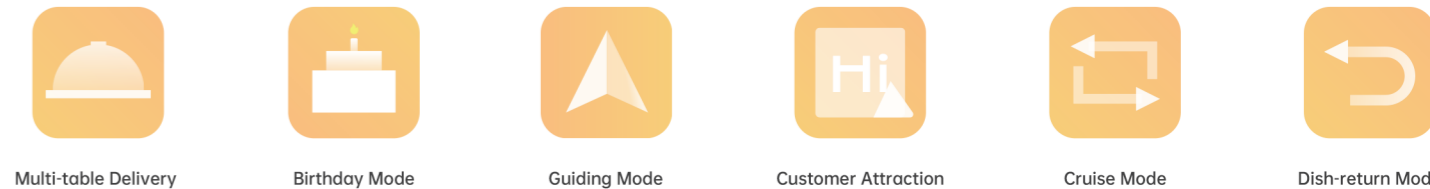
By searching words or clicking pictures, customers may look for the items or the store location they need, then KettyBot will guide the customers to pick up points or locations.

Customized Advertisement

PUDU Business Management Platform offers the flexibility to customize the content presented on the 18.5" screen. The Ad playlist can be easily generated, with customer-defined frequency and the sequence of the Ads.



Multiple Delivery Modes



Versatile Accessories

